

TL7300



TUGGER / LINER

Depth: Up to 7'-0" (2.13m)

Bottom Width: 3'-0" to 7'-0" (1.0 to 2.13m)



G&Z produces the highest quality, lowest operating cost Canal Liners available on the market today. Combining years of field and manufacturing experience, and utilization of the latest technology, makes Eagle Canal Liners the most cost-effective way to increase productivity and profitability.

The subgrade guided, "Tugger / Liner" slipforms the concrete canal lining by tracing the canal subgrade accurately left by a trapezoidal trencher. This simple process results in the lowest possible concrete losses compared to any other technique. The crawler track mounted, towing tractor supplies power to all the Tugger / Liner functions and has enough power to tow the Liner down the canal. All machine functions are well marked and positioned for ease of operation, safety, and optimum operator visibility. The towing tractor is also provided with hydraulic lifting arms, to lift the towed boat liner out of the canal and transport the liner around obstructions in the canal alignment.



TL7300 TUGGER / LINER

STANDARD FEATURES:

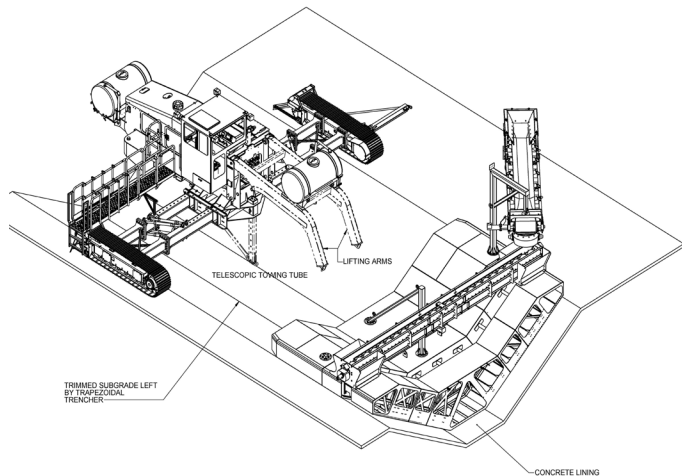
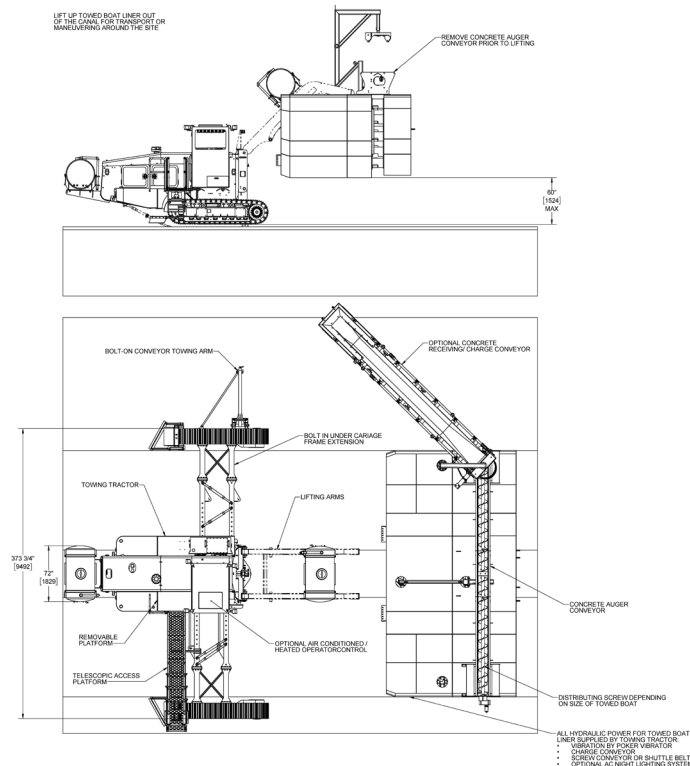
Towing Tractor

- **Engine:** 6 cylinder, water-cooled, Diesel Engine, US EPA Tier 3 / EU Stage IIIA compliant, turbocharged, 275 HP (205kW) at 2100rpm, Intermittent Rating
- **Undercarriage:** G&Z D-4 size Crawlers, track chain with Split Master Link. High reduction planetary gearboxes.
- **Telescopic Undercarriage Frame:** Gauge can be continuously varied by hydraulic cylinders from 8'-3" to 15'-9" (2.5m to 4.8m) total 7'-6" (2.3m) of telescopic capability) to inside of crawler track grouser. For wider canal top widths, bolt-in 7'-0" (2.13m) frame extensions provided on each side.
- Telescopic towing tube and bridle provided on Towing Tractor to tow subgrade guided towed boat liner
- **Speed Range:** Working Speed: 0 - 29 fpm (0 - 8.8 m/min), Travel Speed: 0 - 186 fpm (0 - 56m/min)
- **Weight:** Approx. 100,000 lbs (~45,359kg) (Tractor + Towed Boat)

- **Lighting:** 24V DC Night Lighting System which includes 4 ea. LED Lamps
- **Back up alarm**
- **Manual Steering and Elevation Control.** Liner is subgrade guided.
- **Low Pressure water system** with two 300 Gal (1134L) poly water tanks
- Berm Scrapers

Subgrade Guided Towed Boat Liner

- **Depth:** 3'-0" min. to 7'-0" (1.0 to 2.13m) max.
- **Slopes Possible:** 1:1, 1.25:1, and 1.5:1 as ordered.
- **Bottom Width:** 3'-0" (1.0m) min. to 7'-0" (2.13m) max. depending on what is ordered and the slope. Consult with G&Z.
- Liquefaction hopper, bolt-on adjustable curb forming headers and rear finishing platform with access ladder.
- Liner mounted auger conveyor system to transfer concrete from one side to the other depending on canal size.



OPTIONAL FEATURES

- Operator Cabin: Includes heating and air conditioning
- Operator cabin air pressurization system.
- Automatic steering control in reference to a single string line or laser guidance.
- US EPA Tier 4f/EU Stage IV Diesel Engine
- Concrete Charging Conveyor with 24" (0.61m) wide belt and support, mounted on the Liner. Charging conveyor requirement depends on

the space available next to the canal.

- Poker vibration in the Liner liquefaction hopper.
- Additional bolt-on subgrade guide skins, and bolt-on subgrade and slipform pans to achieve different concrete lining thicknesses and bottom widths. Consult with G&Z Factory.
- Liner mounted "Guillotine" hydraulically operated for automatically cutting the transverse contraction joint. Hand finishing required.
- "Keel Bar" for cutting longitudinal contraction joints. Hand finishing required.